



TRAFFIC /
 PARKING /
 SAFETY OF THE PEOPLE /
 PROPERTY PROTECTION /
 HAPPENING IN THE CITY /
 MONITORING /



ANTIK Telecom
 Carskeho 10
 040 01 Kosice

055 30 / 12345
 samosprava@antik.sk
 www.smartcityportal.sk

Safety and prevention
 for cities / government



SmartCITY SMART CAMERAS



ANTIK
SmartCity
SECURITY

Safety and prevention for cities / government



**GRANT FROM ANTIK
 AND NATIONAL
 BUDGET**



SAFETY

SAFE ROADS IN THE CITY

Smart management of traffic violations,
traffic flow and traffic density

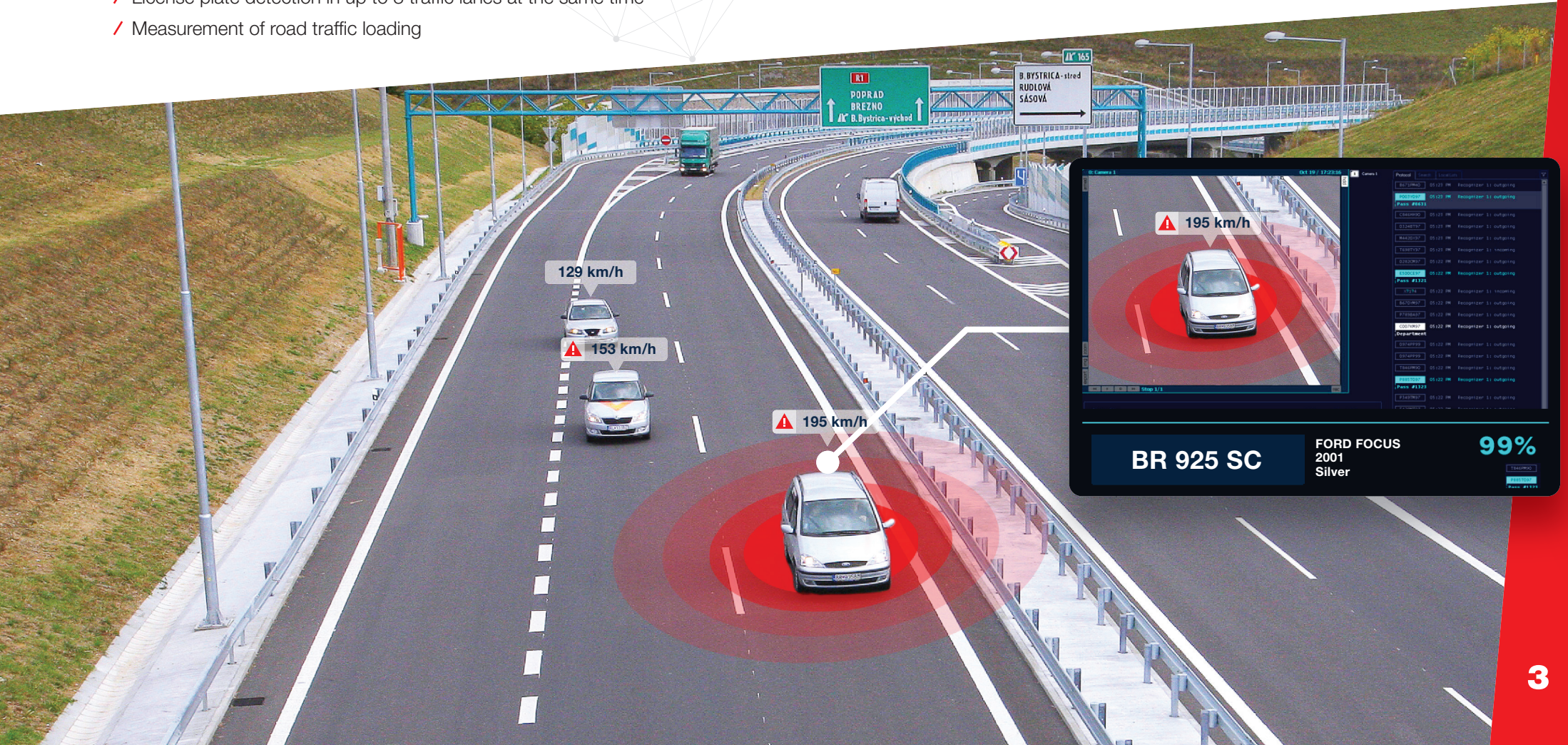
- / Ride in opposite direction
- / Ride on red
- / Stopping/waiting prohibited
- / Measurement of vehicle speed
- / Incorrect parking
- / Driver face recognition



Automatic vehicle detection



- / Colour
- / Vehicle type/model
- / License plate detection in up to 3 traffic lanes at the same time
- / Measurement of road traffic loading



SMART PARKING IN THE CITY

Static transport under control

- / Incorrect parking, parking in a restricted area
- / Number of parking lots vs. parking space occupancy
- / Navigation systems in car parking
- / Parking barriers
- / Recognition of license plate
- / Parking sensors
- / LED navigation boards

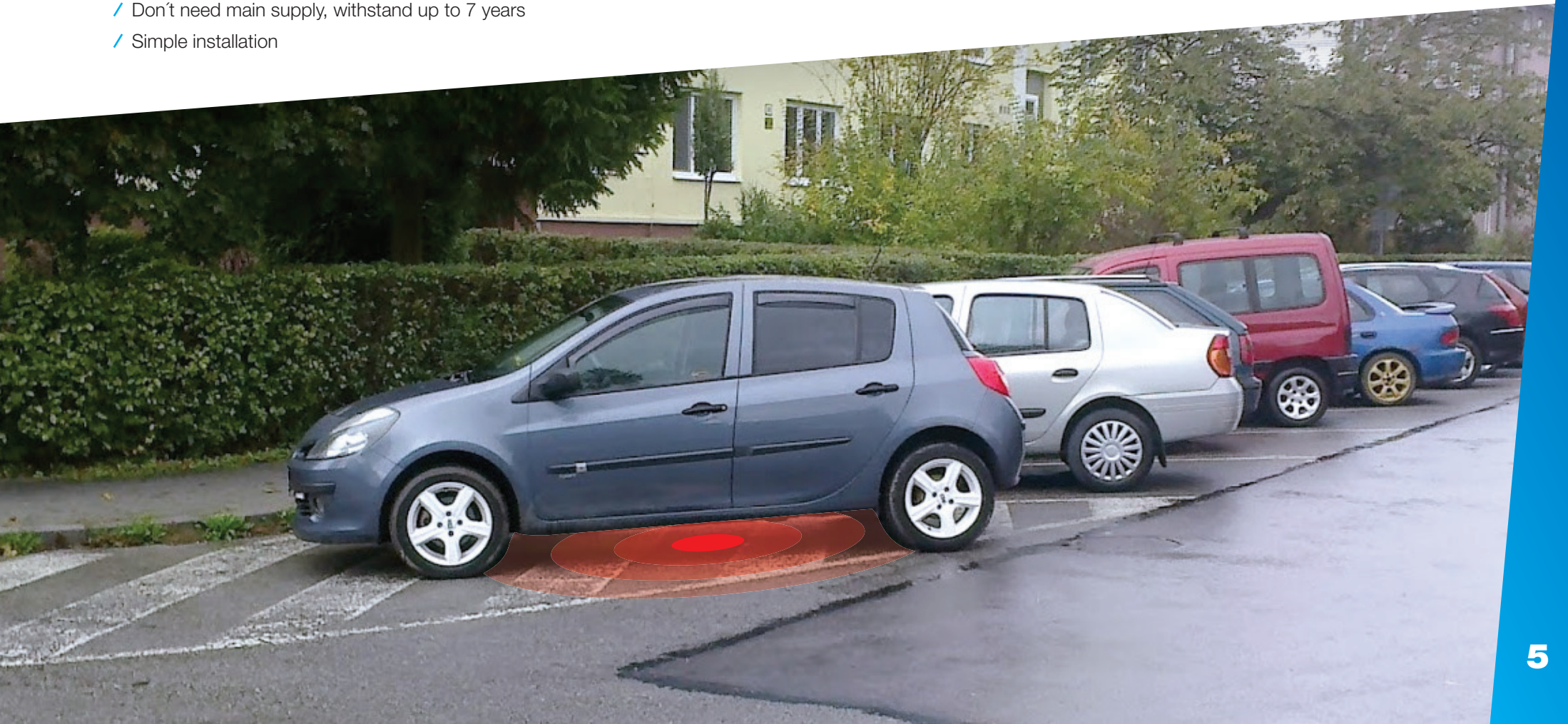


Incorrect parking detection

Smart sensors under the ground



- / Detect vehicle and send notification
- / Don't need main supply, withstand up to 7 years
- / Simple installation



SAFETY OF PASSENGERS IN PUBLIC TRANSPORT

Smart monitoring of transportation

- / Vandalism and petty criminality
- / Passengers counting
- / Face detection
- / Regulation in public transport
- / GPS position of public transport
- / Monitoring of public transport on the map

LINE 34  5 min

License plate: KE123XZ

SPEED: 62,1km/h

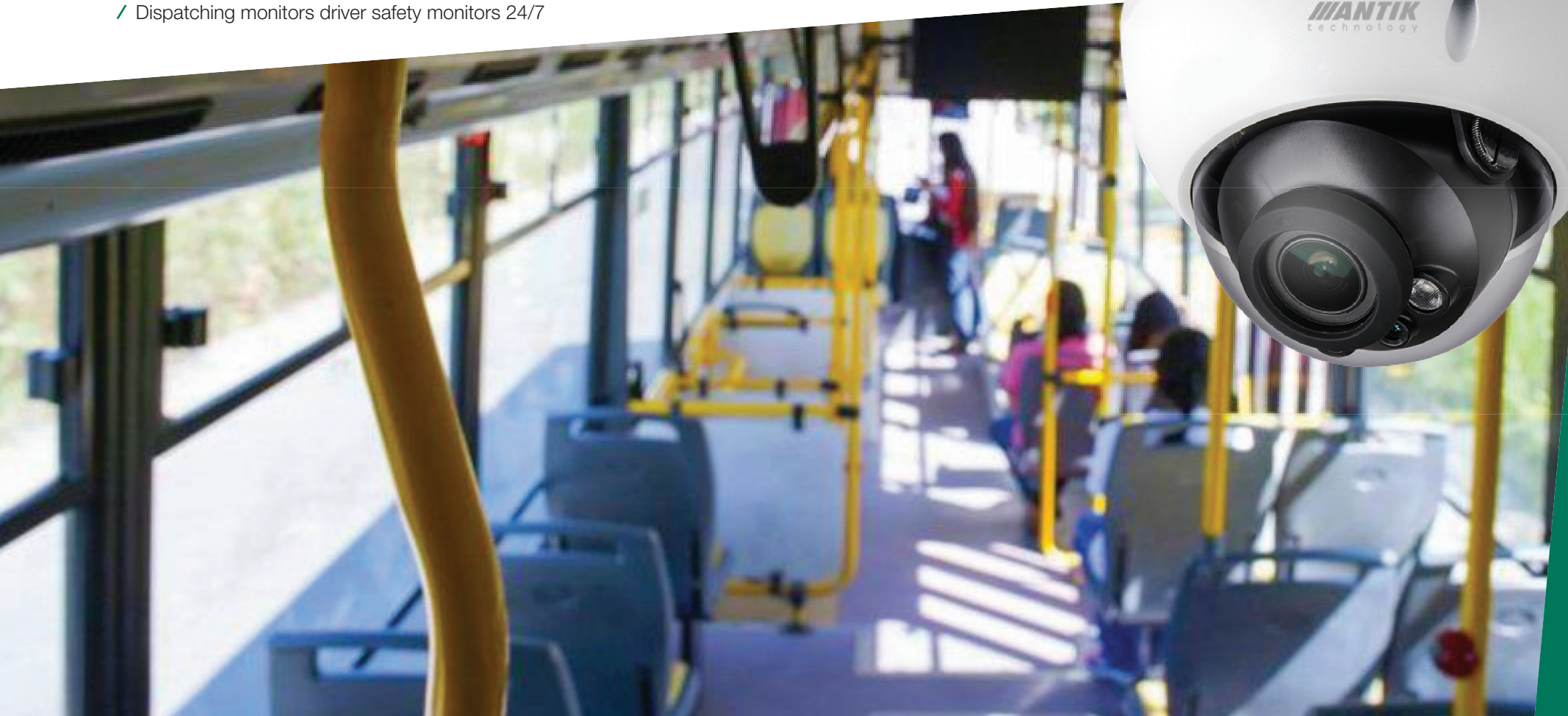
LAST UPDATE: 09.07.2018 13:00:25



Provable **reduction** of vandalism and **cleaner** public transport



- / Better clarity of the various cases in public transport
- / High degree of vandalism prevention and damage
- / Dispatching monitors driver safety monitors 24/7



A SAFE CITY

For both residents and tourists

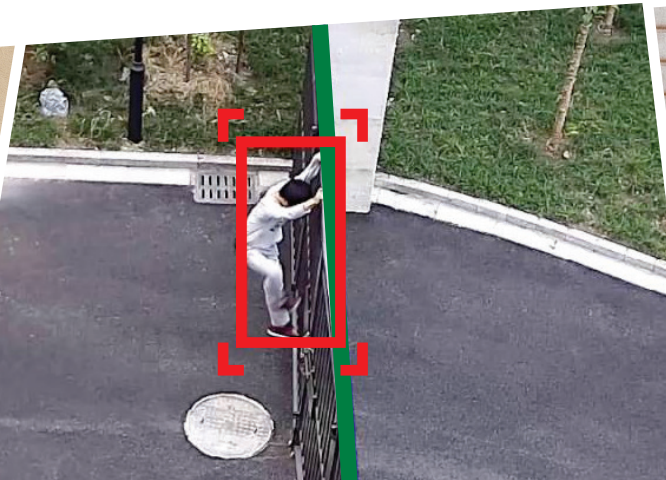
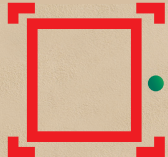
- / Cameras at critical locations in town and village
- / Recognizing person/object, monitoring people from multiple camera files in the city
- / 4K image quality – high quality detail even at a very distant camera and multiple zoom
- / H.265 codec –up to 2 times less data storage for recording with keeping the quality

Protection of urban, municipal property and monuments:

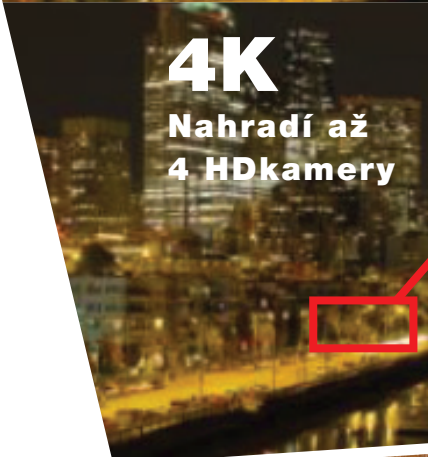
- / Detection of object disappearance
- / Entry and exit detection from and to the area / object
- / Detection of crossing the line with a recognizable direction (person coming through fencing, etc.)



Dissapper / Show of the object



HD



4K
Nahradí až
4 HDkamery



Smart “SOS pillars” with camera for calling a help by pressing the button



- / Location directly in center with higher concentration of people
- / Smart info directly on LED display – temperature, time, announcement
- / The SOS button connects the citizen with the operator
- / Wi-Fi hotspot



PERSONAL VIDEORECORDER

Safe work in the field

- / Fast incident reporting – operator recognizes the location immediately
- / Safety of officers and employees
- / Protection of the cop, calling for medical help
- / Incident record, documentation with resolving subsequent disputes
- / Immediate and fast use
- / Live streaming
- / Resistance to dust, water, shock, fall



In addition to record, compact video recorder **call a help**



- / Simple grip on worker's clothing
- / Video record with 1080p high definition, fast photo capture
- / Alarm button to call help
- / Docking station for charging and backing up the picture



SURVEILLANCE OF ABANDONED PLACES

For tidiness and environmental protection

- / Outlying areas without power supply
- / Powering cameras also from solar panels
- / Temporary camera points – simple installation
- / City/Municipal Park
- / Cemetery monitoring – less thefts and vandalism
- / Black dumps monitoring – a cleaner environment



Outlying locations monitoring without the need for supply



- / Stop the black dumps in their beginnings
- / Reliable identification of offenders
- / Vandal prevention of castles and ruins



A VIEW TO THE CITY

Safe tourism in the city

- / View to interesting parts of town, village and recreation area
- / Current weather in the city, location
- / Temperature, time, fast city notifications indicator directly on the display
- / Current traffic density
- / Up to 180° panoramic view will replace 4 solo cameras on the square
- / Rotary cameras with automatic route



Up to 180° panoramic view



Safety during the public events

Crowd identification and management



- / Automatic person searching in crowd
- / Tracking people from multiple camera files



CENTRAL DISPATCHING

Main Supervision Center

- / Access to all cameras in the city and village
- / Police – camera from the area, officers personal recorders
- / Transport undertaking – cameras on crossroads, in public transport, vehicle traffic control
- / Public parking management
- / Urban areas
- / Reception of hospitals, retirement home etc.



Live preview
Touch 10.1 display
Play the record
PTZ control
Video Wall control
Two-way audio



Mosaic screens with a narrow frame made to measure



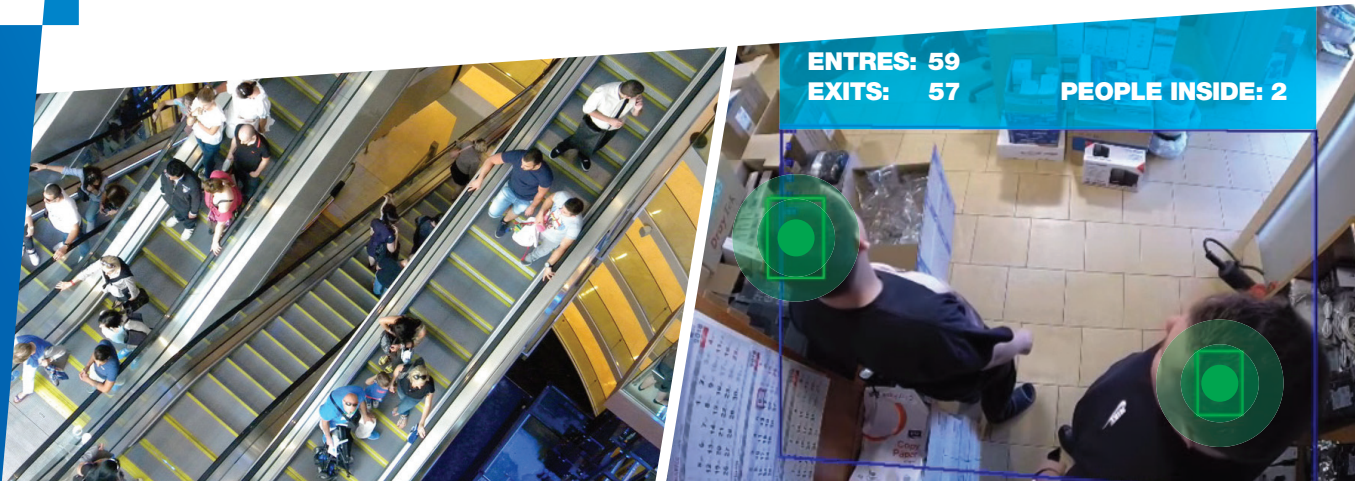
- / Thanks to special screens, the spaces between them are only minimal
- / All images at one switchable place
- / Direct contact with field workers



LIVE PEOPLE COUNTING

Smart people detection in the selected area

- / People counting in selected area in camera shoot
- / Combination with cross-over line with detection of movement direction
- / Applicable as an analysis of the store's plenary at a particular time
- / Recognition of entry and exit from a to the area
- / Graph display



Heatmap - frequency of customer movement in stores



- / Optimization of the assortment displayed
- / The most frequent places detection
- / Display in colour spectrum



MOBILE MONITORING STATION

Camera dispatching close to happening

- / Monitoring and control of camera system in terrene
- / Fast movement of monitoring station to place, where something is happening
- / Suitable for social events, strikes, riots, etc.
- / Dispatching fully equipped in the vehicle ready to go immediately
- / Unobtrusive design, appearance of a conventional van



More control and security at the place of happening



- / Whatever happens, vehicle arrives directly to the place of happening
- / Faster reaction time and timely preventive measures



BASIC

Overview of selected models



ATK-B201-MIRP+

Static bullet 2Mpx camera with night vision max. 60 m and with the option to set focal length.



ATK-D201-MIRP

Static dome 2Mpx camera with night vision max. 60 m and with the option to set focal length.



ATK-HSD201-IRP+

High-speed rotating 2Mpx camera with 25-times option to zoom and with night vision up to 100 m.



ATK-X201-IRP+

Camera with panoramic view of an area with the viewing angle up to 180° and with night vision up to 30 m.



ATK-LPR201-IRP

Camera with functionality of reading vehicle licence plate within 10 m, suitable for example for car parks.



ATK-NVR1601-4K

Recorder with the ability to connect 16 cameras with smart image processing features for basic cameras.



ATK-K01

Basic model of control keyboard for controlling ANTIK cameras.



ANTIK-B401-MIRP

Static bullet 4Mpx camera with night vision up to 50 m and the option to set focal length.



ANTIK-D401-MIRP

Static dome 4Mpx camera with night vision up to 50 m and the option to set focal length.



ANTIK-HSD401-IRP+

High speed 4Mpx camera with 30-times option zoom and with night vision up to 100 m.



ANTIK-X301-IRP+

Camera intended to count people going in and out of the area with night vision up to 10 m.



ANTIK-LPR202-IRP

Camera with the ability to read vehicle license plates from one traffic lane with max. speed up to 200 km/hour.



ANTIK-NVR1602-4K

Recorder with ability to connect 16 cameras with smart image processing for extended cameras.



ANTIK-K02

The highest model of control keyboard for controlling ANTIK cameras with touch monitor and additional keyboard.

ANTIK
t e c h n o l o g y

SmartCITY

Overview of selected models

EXTENDED